



# Vedette monitoring system

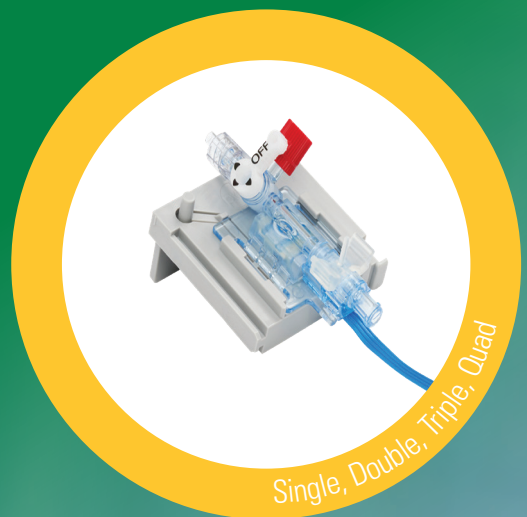
## Invasive blood pressure monitoring

Vedette monitoring system is a complete fully integrated system that includes colour coded lines and Closed Sampling Systems reducing the potential for error and improves patient and staff safety.

The transducer is designed with German precision and accuracy, and is available in a range of configurations providing accurate results you can rely on.

Vedette monitoring system simplifies the complexity of invasive blood pressure monitoring.

**Partners in Healthcare Associated Blood Stream  
Infection Prevention Products and Strategies**



Single, Double, Triple, Quad



ITL BioMedical, an Australian-owned company with a long history of working with Australian healthcare professionals to create tailored solutions for Australian hospitals and healthcare facilities.

Arterial and Central Venous Catheters are commonly used in critically ill patients in the Intensive Care Unit (ICU) and in high-risk patients in the perioperative area. Not only to monitor blood pressures, but to also obtain blood samples for arterial blood gas (ABG) and other diagnostic tests. Closed invasive pressure monitoring devices are well established in both ICU and Operating Theatres and compared to open systems, closed systems show clear advantages. Closed systems decrease the risk of nosocomial infections, unnecessary blood loss, accidental applications of drugs into the arterial line and contamination with patient blood.<sup>1</sup>

ICU patients require a high volume and frequency of ABG and electrolyte testing during their admission. Although this testing is vital for the diagnosis and monitoring of the patient's condition, each sample involves a small amount of blood loss. Approximately 17% of all blood loss in the ICU is due to diagnostics tests. ABG sampling alone has been found to involve losses of up to 70ml per day.<sup>2</sup> A comparison study with 1,657 patients also showed a significant reduction in blood loss from 69ml to 35ml per day using a closed system. The absence of the

**classic 3-way stopcock in closed systems can reduce the risk of accidental drug applications via arterial access and can reduce the risk of blood contamination of hospital staff. <sup>1</sup>**

**Vedette monitoring system is a complete fully integrated system, designed with German precision and accuracy, to meet International Standard DIN EN 60601-2-34, for safety and performance in invasive blood pressure monitoring. The nABSS fully closed needle-free arterial blood sampling system with colour coded lines improves patient and staff safety by minimising blood loss and risk of accidental injection.**

**Vedette monitoring system is an all-in-one complete invasive blood pressure monitoring system tailored to your hospital's specific needs and simplifies the complexity of invasive blood pressure monitoring, delivering accurate results you can rely on.**

**Customisation available in single, double, triple and quadruple pressure monitoring as well as intra-cranial and intra-abdominal.**

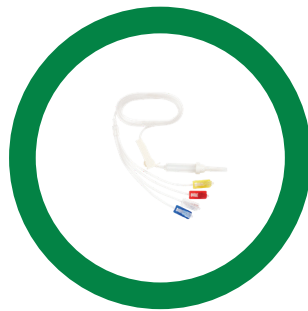
<sup>1</sup> S Westphal, K Zacharowski, et al – Anästhesiologie 2018; 59: 1-7

<sup>2</sup> C Rickard, B Couchman, et al – Crit Care Med 2003; Vol 31 6: 1654-1658

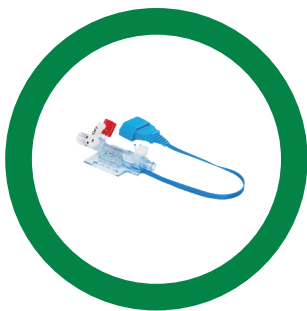
# A system you can rely on under pressure

The Vedette monitoring system features the DPT-6000 range of transducers. User friendly and compact design ensures reliable operation even under difficult conditions.

**State-of-the-art German Microchip technology** converts the actual pressures precisely into electrical signals. The Luer connector on the rear allows the Transducer Tester to be connected for active testing of the complete monitoring system. The test signal appears inverted on the monitor.



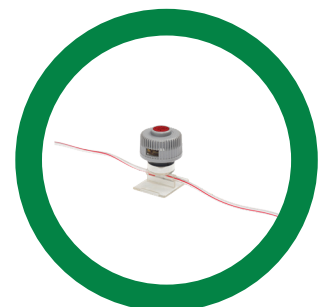
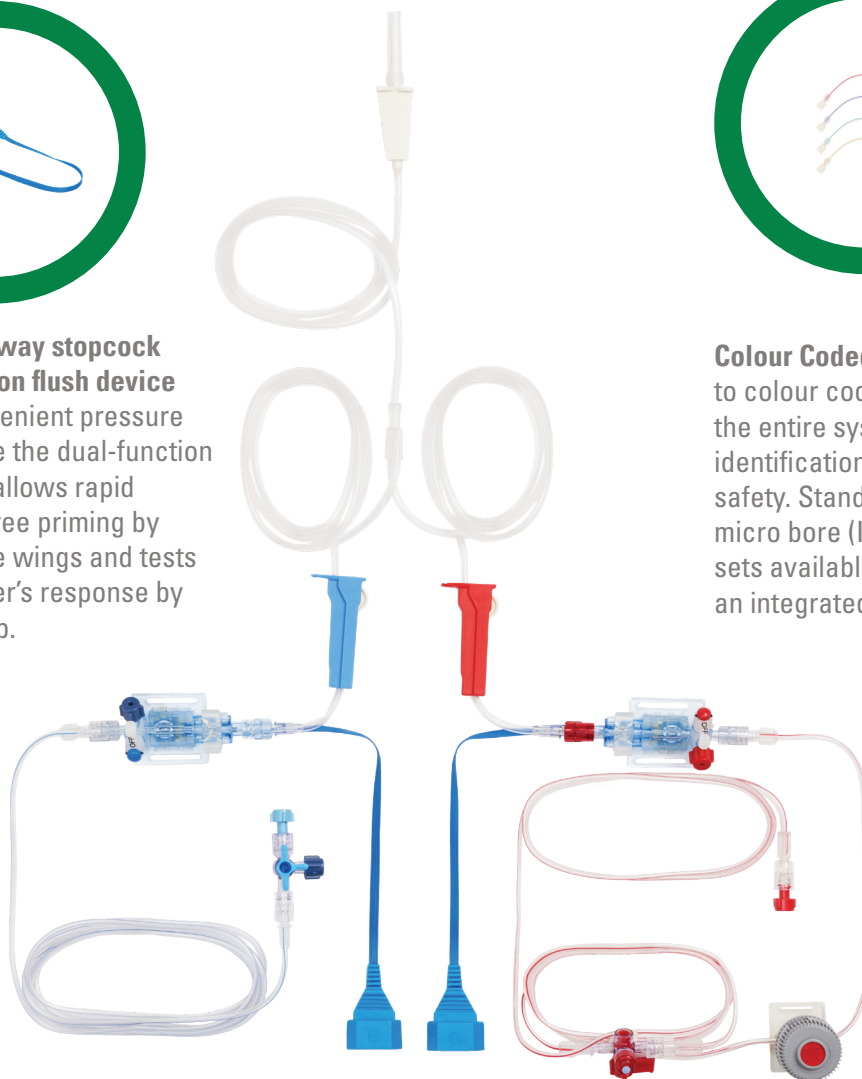
**IV Administration Sets** are specifically designed for pressure monitoring systems. Including non vented drip chamber with a 15micron filter, colour coded luer lock connectors, roller or slide clamps for identification. Available as a single IV Line set or with 2, 3 or 4 branch lines. Made from PVC and non-DEHP.



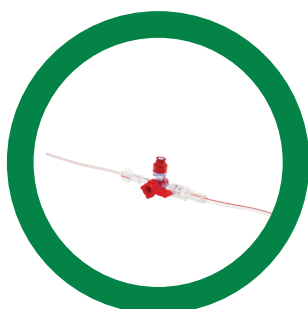
**Integrated 3-way stopcock & dual function flush device** enables convenient pressure zeroing, while the dual-function flush device allows rapid and bubble-free priming by squeezing the wings and tests the transducer's response by pulling the tab.



**Colour Coded System** The option to colour code peripherals within the entire system ensures easy identification and increased patient safety. Standard bore (ID 1.5mm) or micro bore (ID 1.0mm). Extension sets available in 10, 15 or 30cm with an integrated stopcock.



**Needle-Free Sampling** with the Needle-Free Sampling Port protects staff from exposure to the patient's blood and removes the risk of needlestick injuries. 0.9ml priming volume compatible with Luer lock syringes.



**Closed Sampling System** The nABSS reservoir's 2ml volume allows the sample to be safely drawn and returned to the patient, avoiding unnecessary blood loss. Bacterial filter prevents the penetration of bacteria even after repeated use.

# An advanced, reliable and safer invasive blood pressure monitoring system

## Vedette monitoring system

- The Vedette monitoring system can include the unique cable management system (CMS) removing the “spaghetti effect” associated with double, triple, quadruple invasive blood pressure monitoring
- Peripherals within the entire system can be colour coded, clearly identifying specific IV lines and reducing the potential for confusion or errors
- A wide range of accessories – including administration sets, coloured lines, length of lines, caps, modular mounting plates and universal pole clamps – make it easy to customise your system

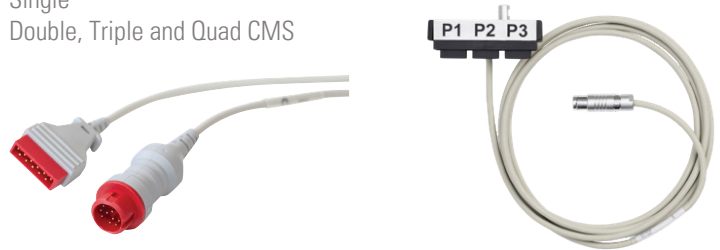


# Interfacing with your monitors

## Configuration flexibility

Designed to meet all of your clinical needs.

- Vedette monitoring system includes a wide range of interface cables for connection to the control monitor.
- Single
- Double, Triple and Quad CMS



- Flexibility in placement of transducer, pole, shoulder or use the Velcro strip to attach to the patient’s arm



- Non-sterile reusable modular mounting plate system combined with the robust adjustable universal pole clamp makes configuration easy



For further information or samples, visit [itlbiomedical.com](http://itlbiomedical.com) or contact your local sales office.

## Product Information



[www.itlbiomedical.com/symbolglossary](http://www.itlbiomedical.com/symbolglossary)